



11-14-2011

Offline HD Catalog

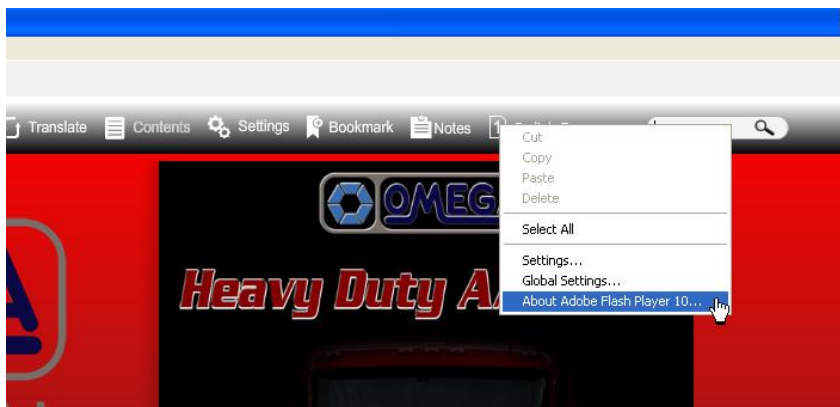
Adobe Flash Player Not accepting Input from Keyboard

If your Offline HD catalog experiences problems with accepting input from your computer keyboard, follow these steps.

In the search box on the top right hand corner of your catalog, right click on the Search Box.



Click on the About Adobe Flash Player



Your keyboard will not be activated.